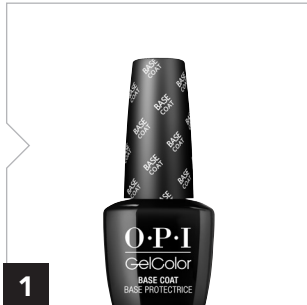


# OPI STEP BY STEP

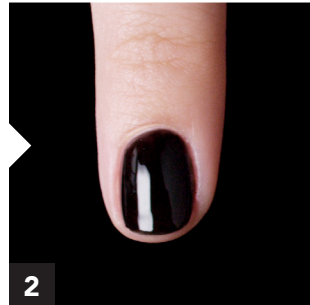
## OPI Chrome Effects GelColor Application

Whether your client prefers natural nails or enhancements, transform their nail service with attention getting OPI Chrome Effects. Available in 8 stunning OPI curated Chrome Effects Mirror-Shine shades and non-yellowing OPI Chrome Effects No-Cleanse Top Coat. Follow OPI's GelColor nail prep and application for 2+ weeks of mirror-like shine.



1

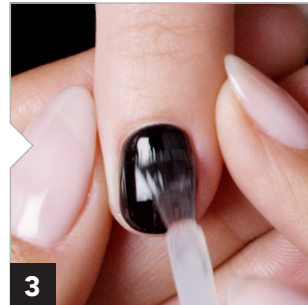
Apply 1 coat of **GelColor Base Coat** to a properly prepped nail. Cap the free edge and cure for 30 seconds.



2

Apply 2 thin coats of **GelColor** shade of choice. Do not cap the free edge. Cure each coat 30 seconds.

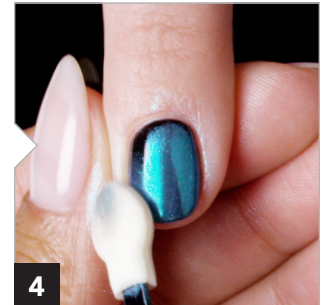
GelColor Black Onyx and Alpine Snow are recommended.



3

Apply 1 coat of **Chrome Effects No-Cleanse Top Coat**. Do not cap the free edge. Cure 30 seconds.

Capping will create a ledge at the free edge.



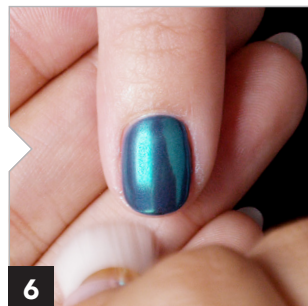
4

Apply **Chrome Effects Powder** shade of choice using a sponge tipped applicator. Pick up a small amount with the applicator and rub onto the surface of the nail.



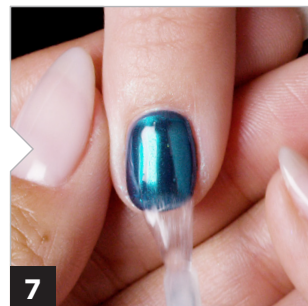
5

For proper Chrome Effects encapsulation, lightly swipe an **EDGE 240 File** against the free edge and sides of nail.



6

Use a cosmetic brush to dust off excess powder from the entire nail and the surrounding skin. Focus on the cuticle area. Particles are micro-fine and risk cross-contamination.



7

Apply 1 coat of **Chrome Effects No-Cleanse Top Coat**. Cap the free edge. Cure 30 seconds.

### PRODUCTS USED

- |   |  |
|---|--|
| <input type="checkbox"/> OPI GelColor Base Coat                 | <input type="checkbox"/> OPI Chrome Effects Powder Shade of Choice |
| <input type="checkbox"/> OPI GelColor Shade of Choice           | <input type="checkbox"/> EDGE White 240 File                       |
| <input type="checkbox"/> OPI Chrome Effects No-Cleanse Top Coat | <input type="checkbox"/> OPI Dual Cure LED Light                   |