

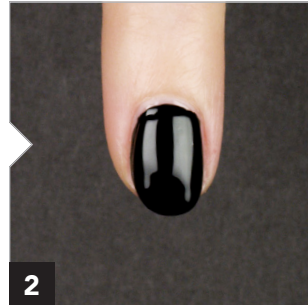
# OPI STEP BY STEP

## OPI Chrome Effects Nail Lacquer Application

For clients who prefer nail lacquer, we thought of them too! Transform their nail lacquer service with attention-getting OPI Chrome Effects. Available in 8 stunning OPI curated Chrome Effects Mirror-Shine shades and OPI Chrome Effects Nail Lacquer Top Coat. Follow OPI's natural nail prep and application for up to 7 days of high-shine wear.

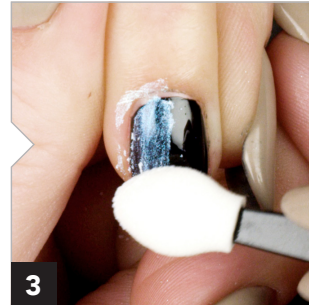


1 Apply 1 coat of **Natural Nail Base Coat** to properly prepped nails.

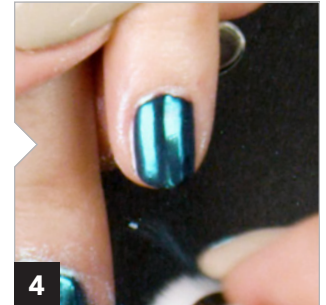


2 Apply 2 thin coats of **Nail Lacquer** shade of choice. Do not cap the free edge. Wait 2-3 minutes until nails are almost dry to the touch; still slightly tacky for powder to attach.

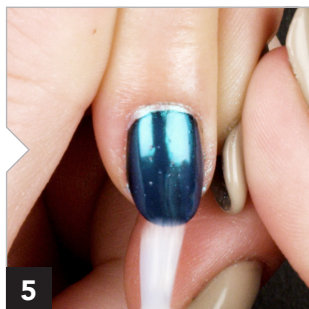
**Nail Lacquer Black Onyx** and **Alpine Snow** are recommended.



3 Apply **Chrome Effects Mirror-Shine Powder** shade of choice using a sponge tipped applicator. Pick up a small amount with the applicator and pat the powder on before rubbing onto the surface of nail.

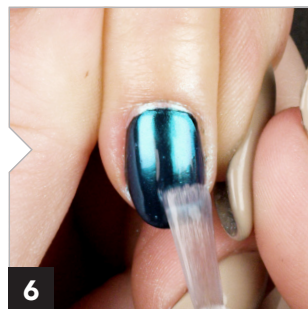


4 Use a cosmetic brush to dust off excess powder from the entire nail and the surrounding skin. Focus on the cuticle area. Particles are micro-fine and risk cross-contamination.



5 Apply 1 thin coat of **Chrome Effects Mirror-Shine Nail Lacquer Top Coat** and wait 2-3 minutes to completely dry.

A wet Top Coat will result in a cloudy finish.



6 Finish with 1 coat of **Nail Lacquer Top Coat**. Cap the free edge.

### PRODUCTS USED

- OPI Natural Nail Base Coat
- OPI Nail Lacquer Shade of Choice
- OPI Chrome Effects Mirror-Shine Powder Shade of Choice
- OPI Chrome Effects Mirror-Shine Nail Lacquer Top Coat
- OPI Nail Lacquer Top Coat