

O·P·I

GEL COLOR

APPLICATION

OPI GelColor is available in 180+ iconic OPI shades.

Ideal for gel polish enthusiasts who want long-lasting quality wear, lasting durability, and high-gloss shine. The fast application and 30 second cure time makes OPI GelColor the system of choice for gel polish services.

Prepare the nail following OPI GelColor Prep Step By Steps.



OPI PRODUCTS USED

- GelColor Stay Classic or Stay Strong Base Coat
- GelColor (Shade of Choice)
- GelColor Stay Shiny Top Coat
- Expert Touch Nail Wipe
- N.A.S. 99 Cleansing Solution
- OPI LED Light
- OPI ProSpa Nail & Cuticle Replenishing Oil

1

Assess client's nail type & lifestyle to determine if they are a Stay Classic or Stay Strong user.



2

To properly prepped nails, apply 1 thin coat leaving a tiny margin around the cuticle area. Cap the free edge. Cure 30 seconds in the OPI LED Light.



10

Remove gel residue with a Nail Wipe saturated with N.A.S. 99.

11

Apply a drop of ProSpa Cuticle Oil and massage into cuticles.



12

FINISHED LOOK.

4

Shake GelColor shade of choice vigorously for 1 minute.

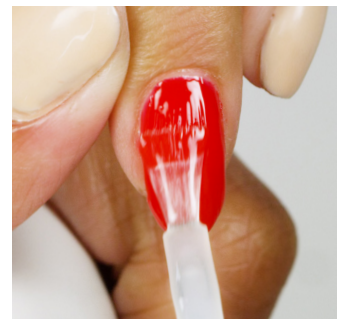
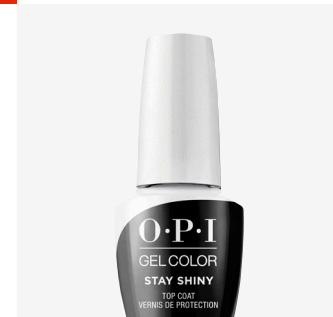


5

Apply 2 thin coats leaving a tiny margin around the cuticle area. Cap the free edge to prevent shrinkage. Cure each coat for 30 seconds in the OPI LED Light.

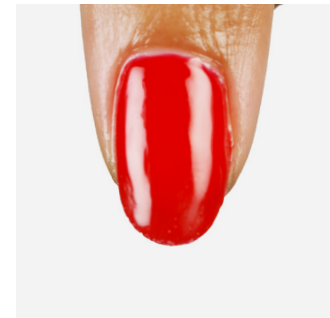
7

Shake Stay Shiny vigorously for 1 minute.



8

Apply a thin coat of Stay Shiny Top Coat, making sure not to flood the cuticle area. Cap the free edge to seal in color. Cure 30 seconds in the OPI LED Light.



Visit [OPI.COM](https://www.opi.com) to find more tips & tutorials featuring GelColor