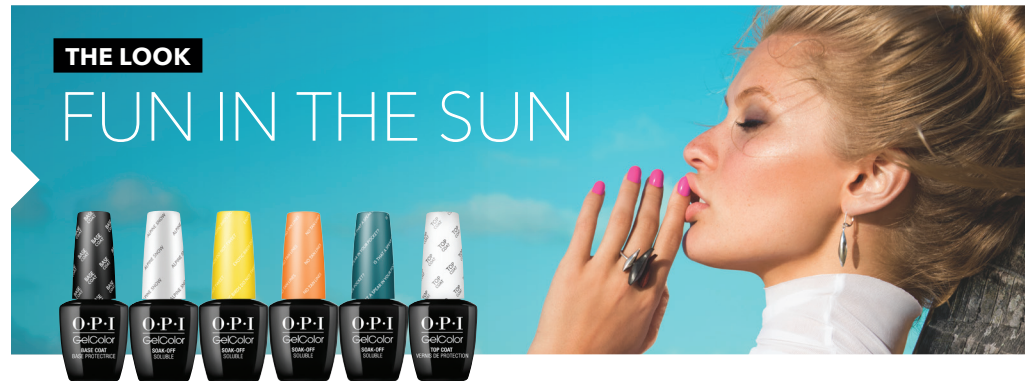


OPI STEP BY STEP

OPI GelColor

FIJI
COLLECTION
spring / summer 2017



CREATE THIS LOOK

On a properly prepared nail, apply a thin coat of **OPI GelColor Base Coat**. Cure 30 seconds in the **OPI LED Light**.



1

Apply one thin coat of **OPI GelColor Alpine Snow** and cure 30 seconds. Create a watercolor base by applying another thin coat of **OPI GelColor Base Coat**, but **DO NOT** cure.



2

Apply two small drops of **OPI GelColor Exotic Birds Do Not Tweet** to the free edge area. Use a Golden Point brush to gently spread the color and create a watercolor design.



3

Apply another small drop of **OPI GelColor Exotic Birds Do Not Tweet** to the cuticle area. Use a separate brush to gently spread the color in an abstract design. Flash cure 15 seconds.



4

Apply one drop of **OPI GelColor No Tan Lines** to the cuticle area. Use a separate brush to spread the color in an abstract design.



5

Apply a drop of **OPI GelColor Is That A Spear In Your Pocket?** to the cuticle area. Remove all color from the GelColor brush and using the dry brush, lightly skim the surface to create a soft textured effect. Cure 30 seconds.

Apply a thin coat of **OPI GelColor Top Coat**. Cure 30 seconds. Remove gel residue with **Expert Touch Nail Wipe** and **N.A.S. 99**.

PRODUCTS USED

- | | | |
|-----------------------------------------------------------------|-----------------------------------------------------------------------|-------------------------------------------------|
| <input type="checkbox"/> OPI GelColor Base Coat | <input type="checkbox"/> OPI GelColor No Tan Lines | <input type="checkbox"/> Expert Touch Nail Wipe |
| <input type="checkbox"/> OPI GelColor Alpine Snow | <input type="checkbox"/> OPI GelColor Is That A Spear In Your Pocket? | <input type="checkbox"/> N.A.S. 99 |
| <input type="checkbox"/> OPI GelColor Exotic Birds Do Not Tweet | <input type="checkbox"/> OPI GelColor Top Coat | <input type="checkbox"/> OPI LED Light |

O·P·I