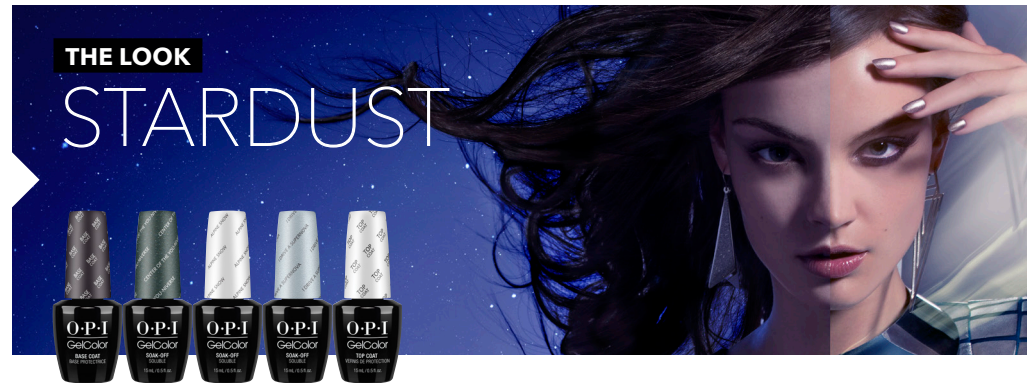


OPI STEP BY STEP

OPI GelColor

STARLIGHT

COLLECTION



CREATE THIS LOOK

On a properly prepared nail, apply a thin coat of **OPI GelColor Base Coat**. Cure 30 seconds in the **OPI LED Light**.



1

Apply one coat of **OPI GelColor Center of the You-niverse**. Cure 30 seconds. Apply second coat of **OPI GelColor Center of the You-niverse**. DO NOT CURE.



2

Using **OPI GelColor Alpine Snow**, apply dots of varying size to the top half of the nail. DO NOT CURE.



3

Using **OPI GelColor I Drive a SuperNova**, apply dots of varying size to the bottom half of the nail. DO NOT CURE.



4

Using the point of the **Golden Point Brush**, start at the cuticle area and drag the brush diagonally through the dots to the center of the sidewall. Continue this process working your way around the cuticle area ALWAYS ending at the center. Then at the tip of the nail drag the brush diagonally through the dots ending at the center of the sidewall. Cure 30 seconds. Apply a rhinestone where the dots meet by pressing it into the GelColor residue.

Apply a thin coat of **OPI GelColor Top Coat**. Cure 30 seconds. Remove gel residue with **Expert Touch Nail Wipe** and **N.A.S. 99**.

PRODUCTS USED

- OPI GelColor Base Coat
- OPI GelColor Center of the You-niverse
- OPI GelColor Alpine Snow

- OPI GelColor I Drive a SuperNova
- OPI GelColor Top Coat
- Golden Point Brush
- Expert Touch Nail Wipe

- N.A.S. 99
- OPI LED Light

O·P·I